

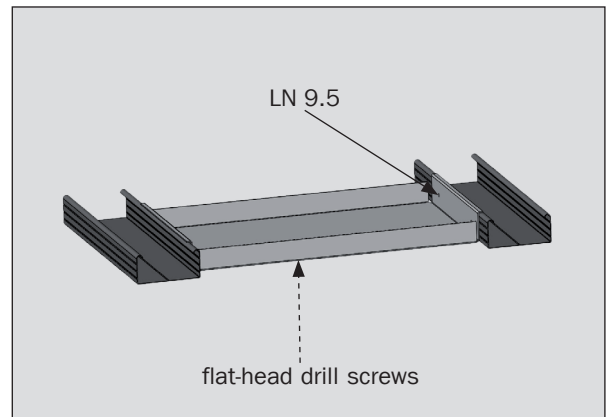
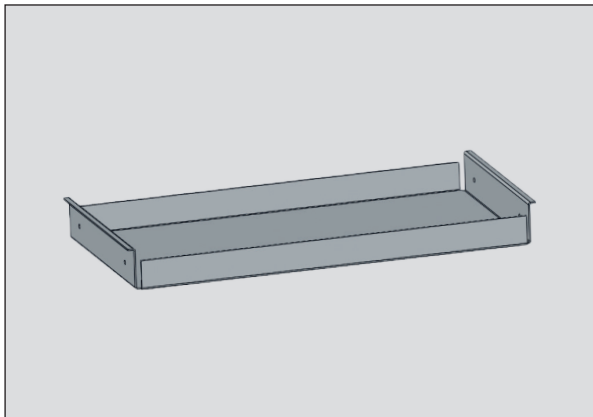
Integrated ceiling components

Product data sheet 251

Technical information

Installation traverse for CD 60/27, type 333 mm

Item no. 104175



Description

- 1 pack = 2 x installation traverses, for secondary profile spacing 333 mm
- Including fixing material:
 - 8 x tapping screws with needle point, LN 9.5 mm for screw connection in the CD profiles
 - 4 x flat-head drill screws, 4.2 x 32 mm, to attach luminaires or the like

Note

- Observe the load class of the ceiling structure; if applicable, achieve a higher load class by means of shorter suspended brackets and primary profile spacing.
- Include additional loads due to damping layer etc. into calculation and planning.

Advantages

- The set contains all required components to appropriately include the additional loads into the framework of acoustic design ceilings / suspended ceilings made of gypsum.
- Material class A1 – non-combustible – due to the use of components made of sheet steel
- Optimised for secondary profile spacing 333 mm – suited for commonly used acoustic design ceilings
- Significantly quicker installation as compared to individual wooden structures